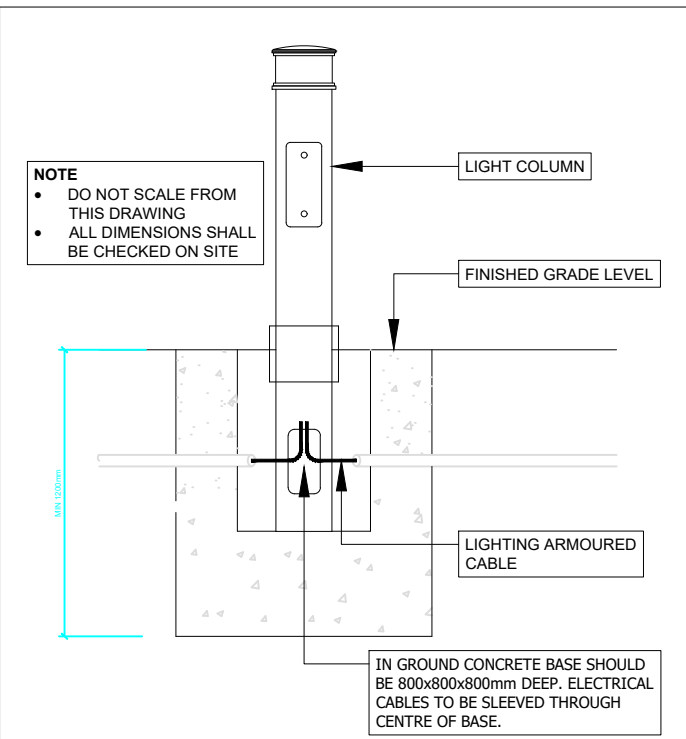


TYPICAL JB40 CHAMBER JUNCTION BOX
SCALE N.T.S



TYPICAL BOLLARD INSTALLATION DETAIL
SCALE N.T.S

LIGHT FITTING SCHEDULE		
TYPE - A		BOLLARD TYPE LIGHT FITTING
1	INSTALLATION TYPE	DECORATIVE LED BOLLARD Ø200 x 1000
2	LIGHT SOURCE, UNIFIED GLARE RATING	11W LED, UGR<TBC
3	CORRELATED COLOUR TEMP	2700K
4	CONTROL GEAR, DALI CONTOL	CLASS 1 ELECTRICAL, DALI DIMMABLE
5	HOUSING, COLOUR, DIFFUSER	BODY AND BEZEL: GALVANISED STEEL, CAST ALUMINIUM, FINISHED DARK GREY (AKZ0500). DIFFUSER: CLEAR 8MM POLYCARBONATE PLATE, FLANGE OR ROOT MOUNTED USING BASES TO BE ORDERED SEPARATELY.
6	LUMINOUS FLUX, EFFICACY	704 lm, 64 lm/W
7	COLOUR RENDERING INDEX MIN	70
8	MAINTENANCE CATEGORY	IP66, IK10
9	RATED MEDIAN USEFUL LIFE	TBC
TYPE - B		BULKHEAD TYPE LIGHT FITTING
1	INSTALLATION TYPE	WALL MOUNTED BULKHEAD
2	LIGHT SOURCE, UNIFIED GLARE RATING	31.4W LED, UGR<TBC
3	CORRELATED COLOUR TEMP	2700K
4	CONTROL GEAR, DALI CONTOL	CLASS 2 ELECTRICAL, NO DALI
5	HOUSING, COLOUR, DIFFUSER	BODY: ALUMINIUM. DIFFUSER: POLYCARBONATE LENS.
6	LUMINOUS FLUX, EFFICACY	3248 lm, 104 lm/W
7	COLOUR RENDERING INDEX MIN	90
8	MAINTENANCE CATEGORY	IP66, IK10
9	RATED MEDIAN USEFUL LIFE	TBC
EXISTING STREET LIGHT		

3. THE CONTRACTOR SHALL CO-ORDINATE FINAL POSITIONS OF ALL EQUIPMENT & SERVICES WITH ALL OTHER TRADES.

4. EXTRA COSTS INCURRED BY THE CONTRACTOR DUE TO THE CO-ORDINATION EXERCISE NOT BEING CARRIED OUT WILL NOT BE ENTERTAINED BY THE ENGINEER.

5. ALL EXTERNAL EQUIPMENT & SERVICES SHALL BE SUITABLY IP RATED.

6. LUMINAIRE TYPES & COLUMN LOCATIONS ARE SPECIFIC TO THE MAKE/MODEL OF LUMINAIRE NAMED IN THE LEGEND. (LIGHTING SIMULATIONS HAVE BEEN RUN USING THIS PARTICULAR FITTING SHOULD ALTERNATIVES BE PROPOSED THE CONTRACTOR SHALL PROVIDE THE ENGINEER WITH THE CALCULATIONS CONFIRMING THE DESIGN REMAINS COMPLIANT WITH THE STANDARDS OUTLINED IN THE PARTICULAR SPECIFICATION.

7. ELECTRICAL INSTALLATIONS TO COMPLY WITH:

- BS EN 12002 NATIONAL RULES FOR ELECTRICAL INSTALLATIONS.
- BS 5481-1
- BS EN 12464-2
- CIBSE LG 8
- BAT CONSERVATION TRUST GUIDANCE NOTE 08/23
- BAT CONSERVATION (IRELAND) 2010
- BAT AND LIGHTING SERIES (INSTITUTE OF LIGHTING PROFESSIONAL, SEPTEMBER 2018)
- GUIDANCE NOTES FOR REDUCTION OF OBTRUSIVE LIGHT GNS1 (INSTITUTE OF LIGHTING PROFESSIONALS 2011)
- SOCIETY OF LIGHT & LIGHTING GUIDANCE DOCUMENTS.

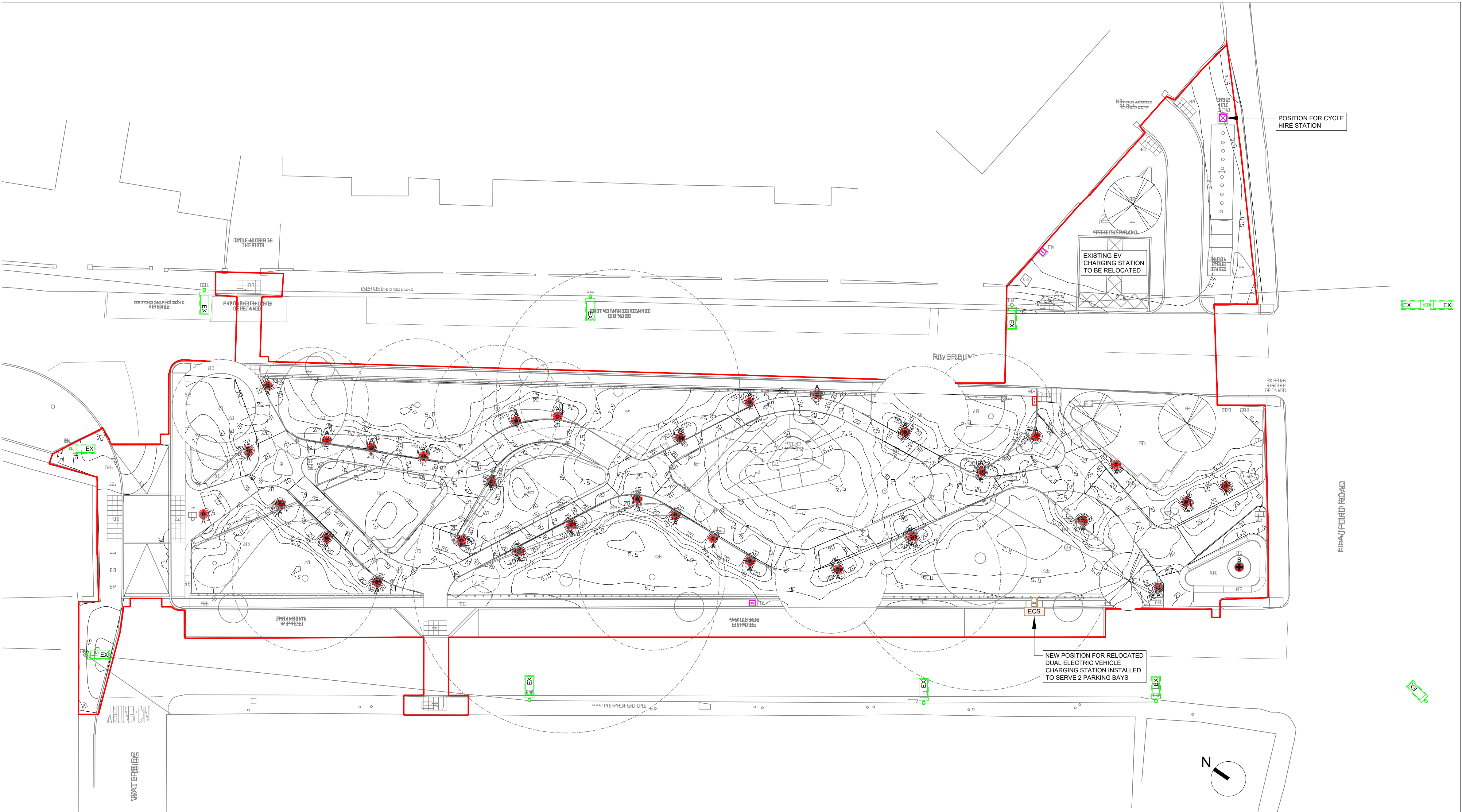
8. THE FINAL DUCT POSITIONS TO BE CO-ORDINATED BY CONTRACTOR ONSITE. THE CONTRACTOR SHALL PRODUCE FULL CO-ORDINATED FINAL BUILDERS WORK DRAWINGS.

9. MANHOLE COVERS TO BE ACCORDING TO ARCHITECTS DRAWINGS & SPECIFICATIONS.

10. ELECTRICAL INSTALLATIONS TO COMPLY WITH LATEST BUILDERS SPECIFICATION FOR ESB NETWORKS INFRASTRUCTURE REQUIREMENTS.

11. MAIN CONTRACTOR IS NOT TO UNDERTAKE ANY TRENCH OR UNDERGROUND WORKS IN RELATION TO ESB WORKS. DIVERSIONS UNTIL THEY HAVE MADE CONTACT WITH LOCAL ESB OFFICE AND HAVE ESB ENGINEERS VISIT SITE TO OVERSEE AND IMPLEMENT WORKS. PROJECT SUPERVISOR CONSTRUCTION STAGE TO ADVISE ESB AT ALL TIMES DURING THESE CRITICAL DIVERSION UNDERGROUND WORKS.

LEGEND	
	LUX LEVELS
	EV CHARGING RETENTION SOCKET
	DUAL ELECTRIC CHARGER STATION
	NEW LIGHTING MICRO-PILLARS CW JB40 CHAMBER
	PARKING METERS



SITE PLAN
SCALE 1 : 200

Rev	Date	Description	Drawn	Ckd		
P1	25-09-24	ISSUED FOR PLANNING	JN	CJ		
Drawing Status:						
PLANNING						
Don O'Malley & Partners Consulting Engineers - Building Services						
92 O'Connell Street, Limerick Ireland Tel: +353 (0)61318677						
Email: services@domalley.com Web: www.domalley.com						
Approved:	Checked:	Drawn:	2024-08-30			
AK	CJ	JN				
Architect:	Client:					
LUC 4th Floor, 57 Hilton Street, Manchester M1 2EJ	Comhairle Cathrach na Gaillimhe Galway City Council					
Project:	Title:					
Woodquay Park Enhancement	Electrical Installation Site Plan External Lighting & EV Layout					
Scale:	Job Number:	Status:				
1:200 @ A1	1819					
Drawing Number:		Client Drawing Number:				
P100						
COPYRIGHT © No part of this document may be re-produced or transmitted in any form or stored in any retrieval system of any nature without the written permission of the Consultant as copyright holder except as agreed for use on the project for which the document was originally written.						